

360° CASSETTE INDOOR UNIT



360° air discharge cassette, with 360° air discharge, which is suitable for different places such as hotels, office buildings, shopping malls, apartments, villas, and families. The all-round discharge cassette type indoor unit's air louver can be independently controlled to realize a new air flow form. The air supply range is wide and temperature distribution is more uniform, bringing a comfortable environment experience. With optional human sensory function, the control is more intelligent and user-friendly.

MODEL			AMV6-22C	AMV6-28C	AMV6-36C	AMV6-45C	AMV6-56C	
Capacity	Cooling	kW	2.2	2.8	3.6	4.5	5.6	
	Heating	kW	2.5	3.2	4.0	5.0	6.3	
Power supply	V/Ph/Hz		220-240V~ 50Hz & 208-230V~ 60Hz					
Power Consumption	W		26	26	26	26	35	
Airflow volume (H/M/L)	m ³ /h		800/700/600				950/850/750	
Rated Current	Cooling	A	0.2	0.2	0.2	0.2	0.2	
	Heating	A	0.2	0.2	0.2	0.2	0.2	
Sound pressure level (H/M/L)	dB(A)		33/30/28	33/30/28	33/30/28	34/30/28	37/33/30	
Connecting pipe	Liquid	mm	Φ 6.35	Φ 6.35	Φ 6.35	Φ 6.35	Φ 9.52	
	Gas	mm	Φ 9.52	Φ 9.52	Φ 12.7	Φ 12.7	Φ 15.9	
Drain pipe	External dia.	mm	Φ 25	Φ 25	Φ 25	Φ 25	Φ 25	
	Thickness	mm	2.5	2.5	2.5	2.5	2.5	
Main body	Dimension (W×D×H)	Outline	mm	840×840×240	840×840×240	840×840×240	840×840×240	840×840×240
		Package	mm	963×963×325	963×963×325	963×963×325	963×963×325	963×963×325
	Net weight/Gross weight	kg	27.0/35.0	27.0/35.0	27.0/35.0	27.0/35.0	28.0/36.0	
Panel	Model		TF06					
	Dimension (W×D×H)	Outline	mm	950×950×65	950×950×65	950×950×65	950×950×65	950×950×65
		Package	mm	1033×1020×110	1033×1020×110	1033×1020×110	1033×1020×110	1033×1020×110
	Net weight/Gross weight	kg	6.0/9.5	6.0/9.5	6.0/9.5	6.0/9.5	6.0/9.5	

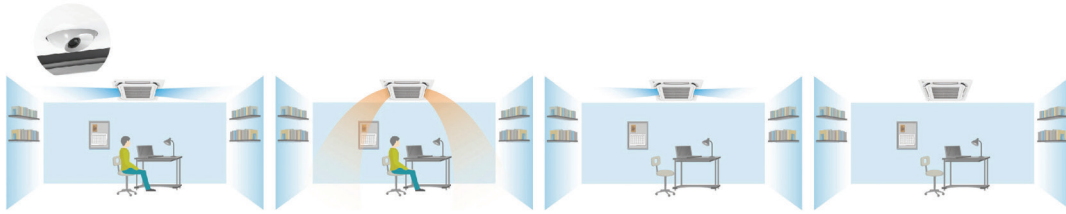
MODEL			AMV6-71C	AMV6-90C	AMV6-112C	AMV6-140C	AMV6-160C	
Capacity	Cooling	kW	7.1	9.0	11.2	14.0	16.0	
	Heating	kW	8.0	10.0	12.5	16.0	18.0	
Power supply	V/Ph/Hz		220-240V~ 50Hz & 208-230V~ 60Hz					
Power Consumption	W		60	85	115	115	170	
Airflow volume (H/M/L)	m ³ /h		1150/950/850	1250/1000/900	1650/1300/1100		2000/1800/1430	
Rated Current	Cooling	A	0.4	0.4	0.6	0.6	1.2	
	Heating	A	0.4	0.4	0.6	0.6	1.2	
Sound pressure level (H/M/L)	dB(A)		37/34/31	39/37/34	43/41/39	43/41/39	51/48/42	
Connecting pipe	Liquid	mm	Φ 9.52	Φ 9.52	Φ 9.52	Φ 9.52	Φ 9.52	
	Gas	mm	Φ 15.9	Φ 15.9	Φ 15.9	Φ 15.9	Φ 19.05	
Drain pipe	External dia.	mm	Φ 25	Φ 25	Φ 25	Φ 25	Φ 25	
	Thickness	mm	2.5	2.5	2.5	2.5	2.5	
Main body	Dimension (W×D×H)	Outline	mm	840×840×240	840×840×240	840×840×290	840×840×290	
		Package	mm	963×963×325	963×963×325	963×963×379	963×963×379	
	Net weight/Gross weight	kg	28.0/36.0	29.0/37.0	33.0/42.0	33.0/42.0	36.0/44.0	
Panel	Model		TF06					
	Dimension (W×D×H)	Outline	mm	950×950×65	950×950×65	950×950×65	950×950×65	950×950×65
		Package	mm	1033×1020×110	1033×1020×110	1033×1020×110	1033×1020×110	1033×1020×110
	Net weight/Gross weight	kg	6.0/9.5	6.0/9.5	6.0/9.5	6.0/9.5	6.0/9.5	

*Sound pressure level measured at 1,4 m distance.

The data is measured under following conditions. Cooling: Indoor temp. 27C DB, 19C WB. Heating: Indoor temp. 20C DB.

● 360 ° Overall Temperature Field Identification

Intelligent sensory function control and high temperature field recognition accuracy can avoid cold wind blowing people, make warm wind follow people and prevent direct blowing to the human body; when it detects that no one is indoors, it automatically adjusts the set temperature; if there is no one indoors for long, the unit will be automatically shut off.



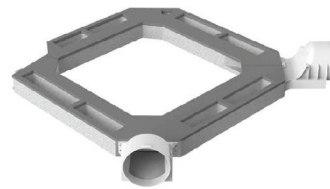
Note: This function should be customized and needs to be used with wired controller XE70-33/H.

● 360° Surrounding Airflow

Wide air supply range, more uniform temperature distribution and more comfortable experience.

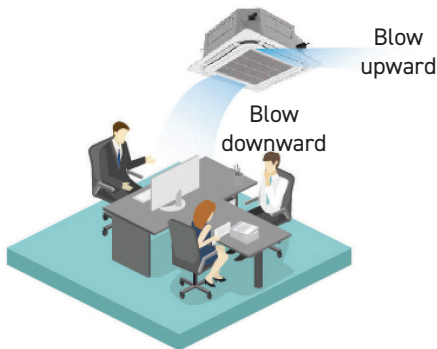


● Optional fresh air fitting can effectively introduce 8 ~ 10% of outdoor fresh air and improve indoor comfort.



● Independent Swing Control

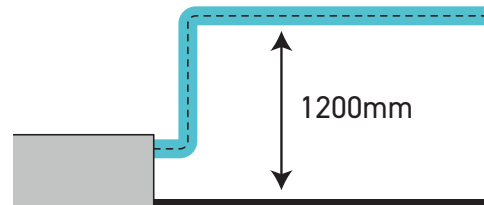
The four air louvers can be controlled independently, and the air supply direction can be adjusted independently to achieve different angle combinations to avoid direct air blowing.



Note: This function should be customized and needs to be used with wired controller XE70-33/H.

● DC Quiet Condensate Pump

The pump drainage lifting height can be up to 1,200mm, and vertical installation height of the unit can be flexibly adjusted, with high engineering adaptability.



● Optional lifting panel, and the intel grille adopts two-way suspension lifting technology to realize the lifting function of the grille. User can clean the filter by himself thanks to convenient maintenance.

● Control system lineup

STANDARD
Wireless controller YAP1F



* Optional fitting, please consult engineering and technical personnel.